

E2 SOLO

Symphony No. 7

Ludvig van Beethoven

II. Allegretto ♩=64

Harm. 12° 4 23

① *mp*

28 **A** 0 *sempre quasi staccato* 32 3 3 3 3

p on the 4th string

36 40

44 48

pp

B 52 *arco voce* 1 1 3 4 2 1 1 2

ppp on the 4th string

56 V_I 1 3 V₃ V₃ 1 3 4 3 1 1 3 60 VI IV 1 3 4 V₃ 1

E2 SOLO

64 *V₃* 2 1 *6⁴IV*

68 4 *VI* *IV* *VII* *V* *7²IV*

softer

C

76 *8^{va}* 2 1

not too loudly

84 *8^{va}*

88 (8)

piu f

96 (8)

100 **2**

E2 SOLO

8^{va} **D** 104 108

112 116

120 loco 2 3 3

124 **E** 128

132 136 **F** harm.

140 8^{va} 144 separated

148 f

E2 SOLO

G 152 156

pp

160

164 168

172

176

8^{va} 180

pp *mp* *pp* *mp*

184 **H** E1 solo

188



192 **I**

196



pp

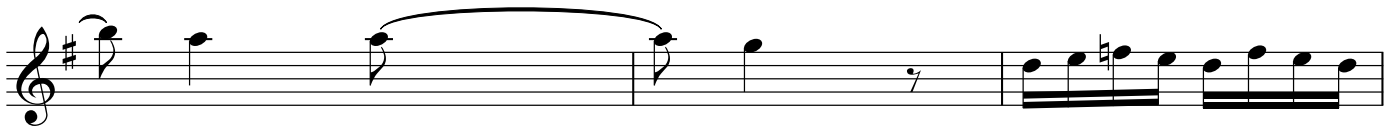


200

204



J



208

212



K

216



220

2



E2 SOLO

8^{va} **I** 228 232

p

236 *p*

240 244

248 **M** 258^{va}

N 8^{va} 256 E. Gtr. 260 *Play solo* 2

O 264 8^{va} 268 2

272 276 Harm. 12° ① *pp* *mf*